

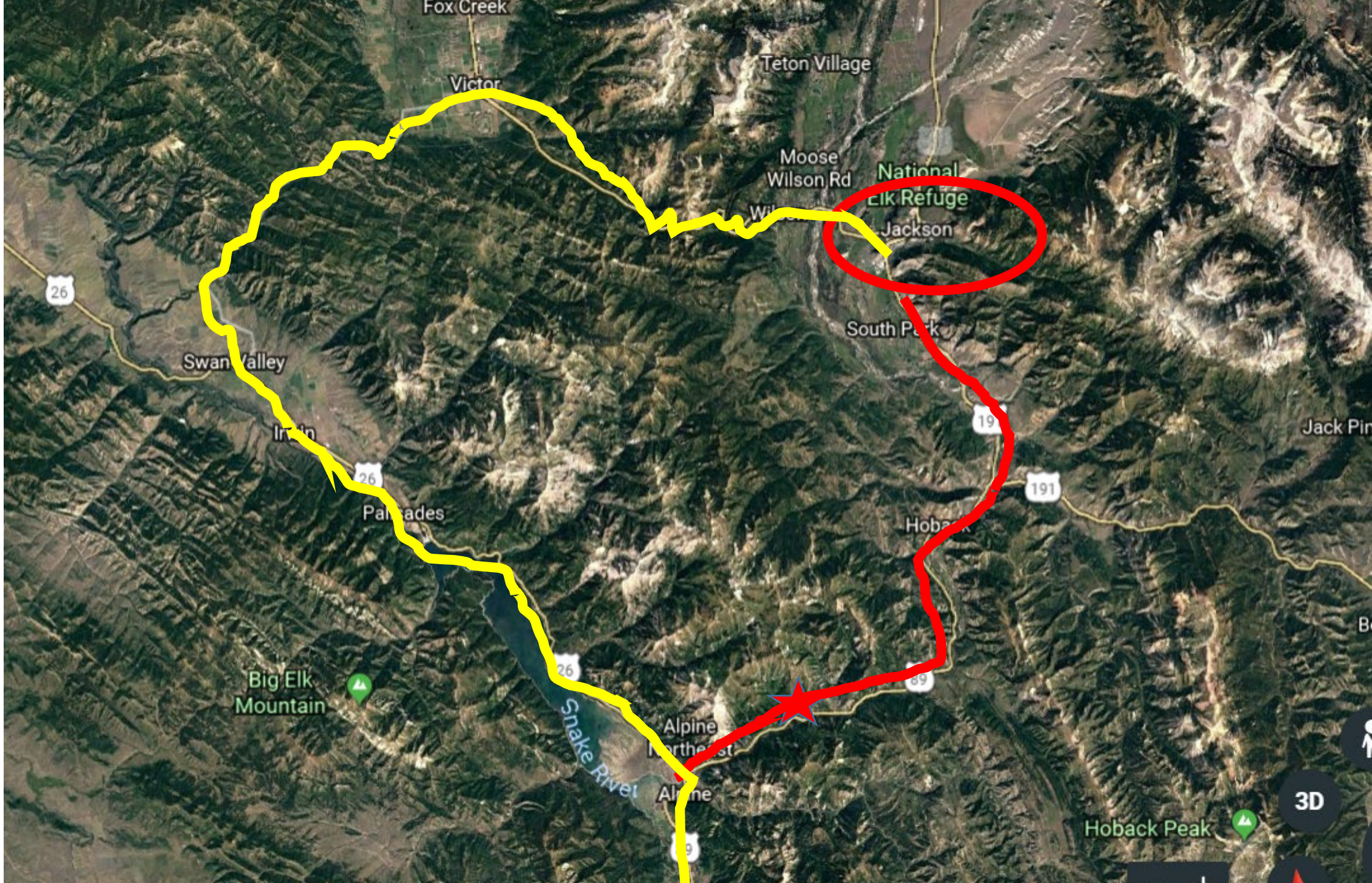
Lessons from a Highway Emergency on a Wild & Scenic River



A case study from the Snake Wild & Scenic River, Bridger-Teton National Forest







Fox Creek

Victor

Teton Village

Moose Wilson Rd

National Elk Refuge

Jackson

South Park

26

Swan Valley

Irwin

26

Palisades

191

191

Hoback

Jack Pine

Big Elk Mountain

Snake River

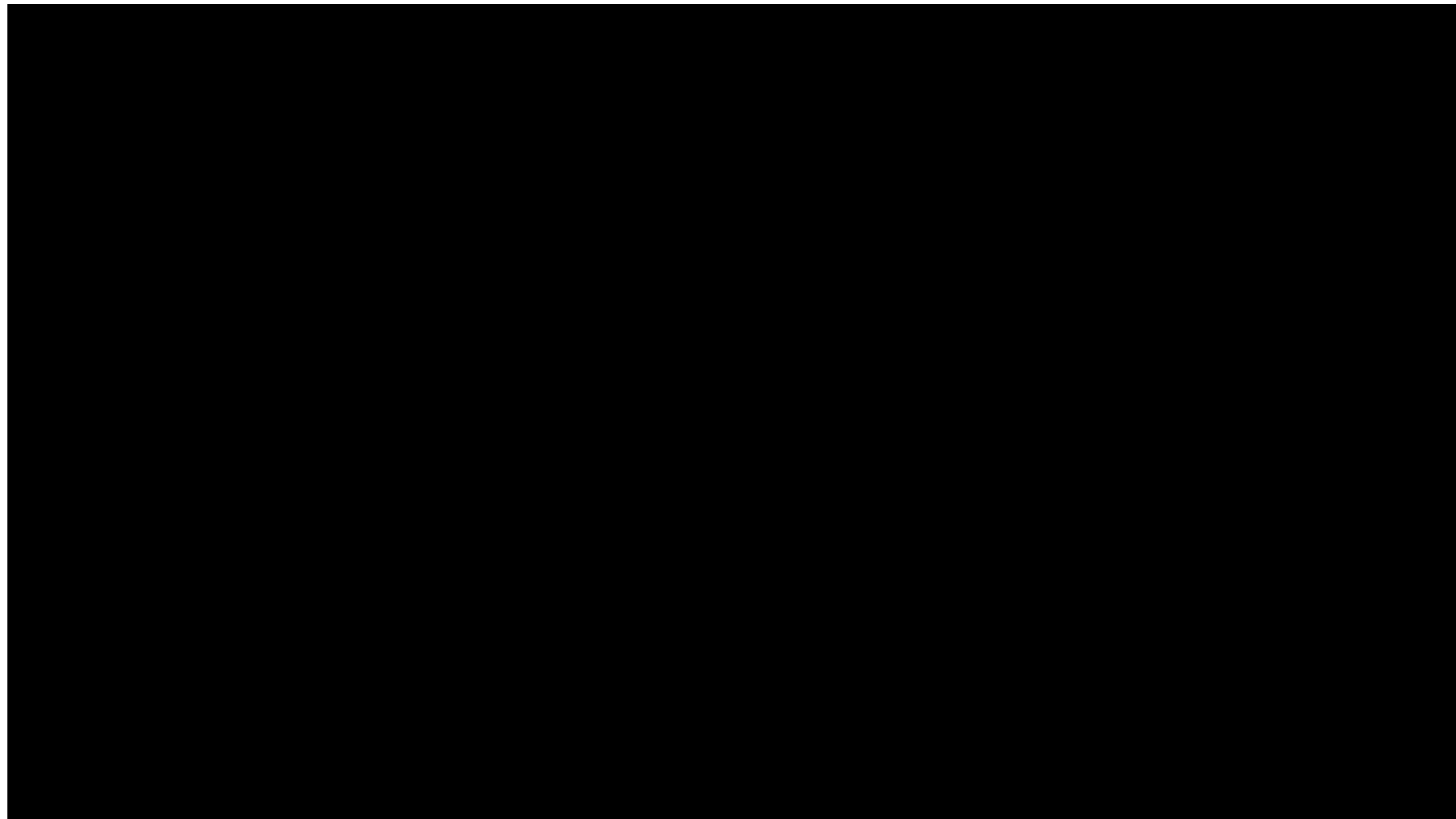
Alpine Northeast

Alpine

69

Hoback Peak

3D





WYDOT

KOMATSU

05/28/2011



05/26/2011



05/28/2011









05/26/2011

**Does Section 7 apply in
an emergency?**

**Does this become your
emergency as well?**

**Does what other
people think matter?**



“Open the road as quickly and as safely as possible.”

Adverse Action =

- ✓ **Continued closure of Highway**
- ✓ **Massive impact on Commuters**
- ✓ **Very Unhappy Electeds at all levels**
- ✓ **Oncoming Tourism Disaster Ahead**

Ideas?



Condition of the River Bank in Question!

- Pristine or highly altered?
- Level of nearby development?

**The worst part
of trying to solve
this dilemma?**



What was WYDOT's true concern?

“WYDOT geologists are concerned that erosion from high flows could erode the base of these landslides adding to existing instabilities that could cause further damage to the highway that could lead to new closures.”

BINGO

| B | I | N | G | O |
|---|--|---|---|---|
| 8 | 29 | 35 | 50 | 73 |
|  |  |  |  |  |
| 5 | 22 | 38 | 46 | 75 |
| 11 | 19 | 39 | 57 | 70 |

Our Answer

- **Allow the emergency repair to occur immediately to preserve the highway infrastructure and reopen the highway.**
- **The emergency repair is temporary as it is only needed for high water.**
- **Once the water drops, geologists and engineers will have a better idea of what actually is needed, if anything.**
- **At that time, the emergency rip-rap will be pulled, and an intervention that will have a favorable Section 7 result will be installed.**
- **All signs of machinery entry, off-color rocks, etc. will be removed from the area.**





05/28/2011



05 / 29 / 2011



