

MANAGING THE LOWER DESCHUTES WILD & SCENIC RIVER



OVER THIRTY YEARS OF PARTNERSHIP



HISTORY

(1970s - 1980s)

- **Boating use levels significantly increasing**
- **Cross pollination & coordination between agencies limited**
- **Potential impacts (especially negative) were high**



HISTORY

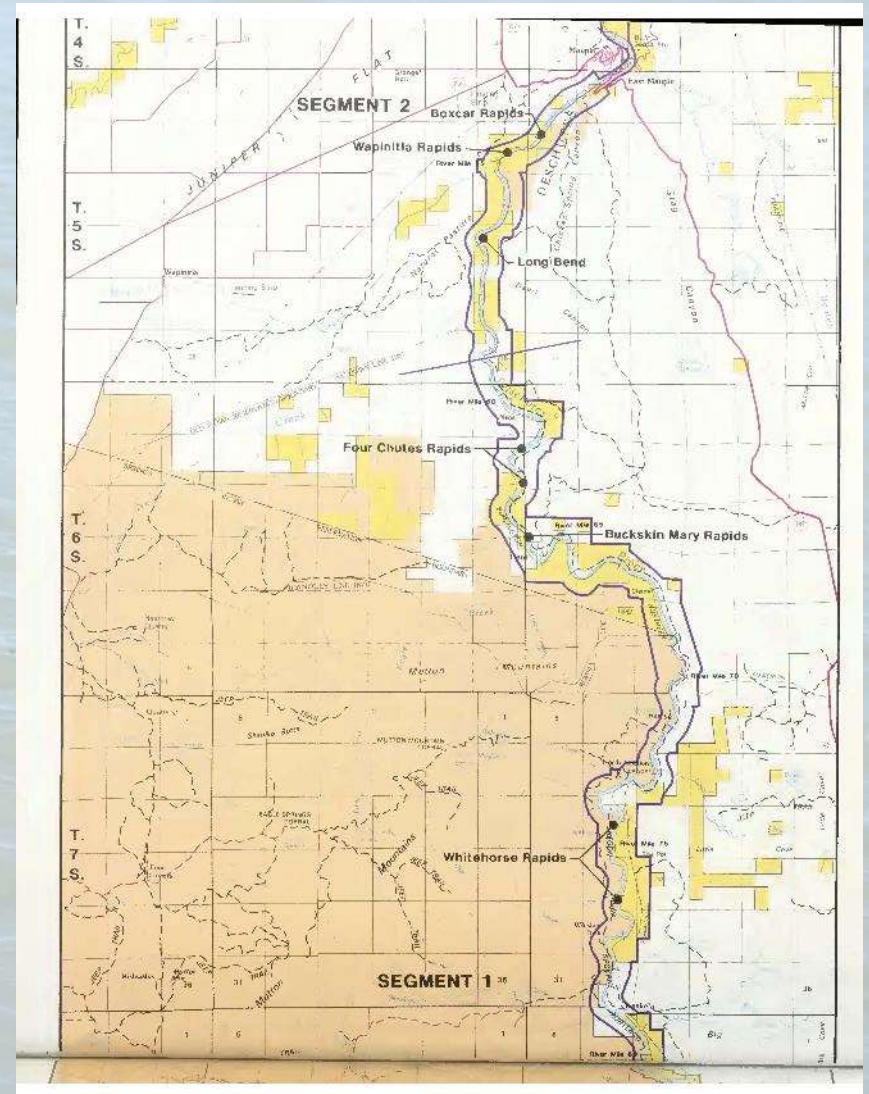
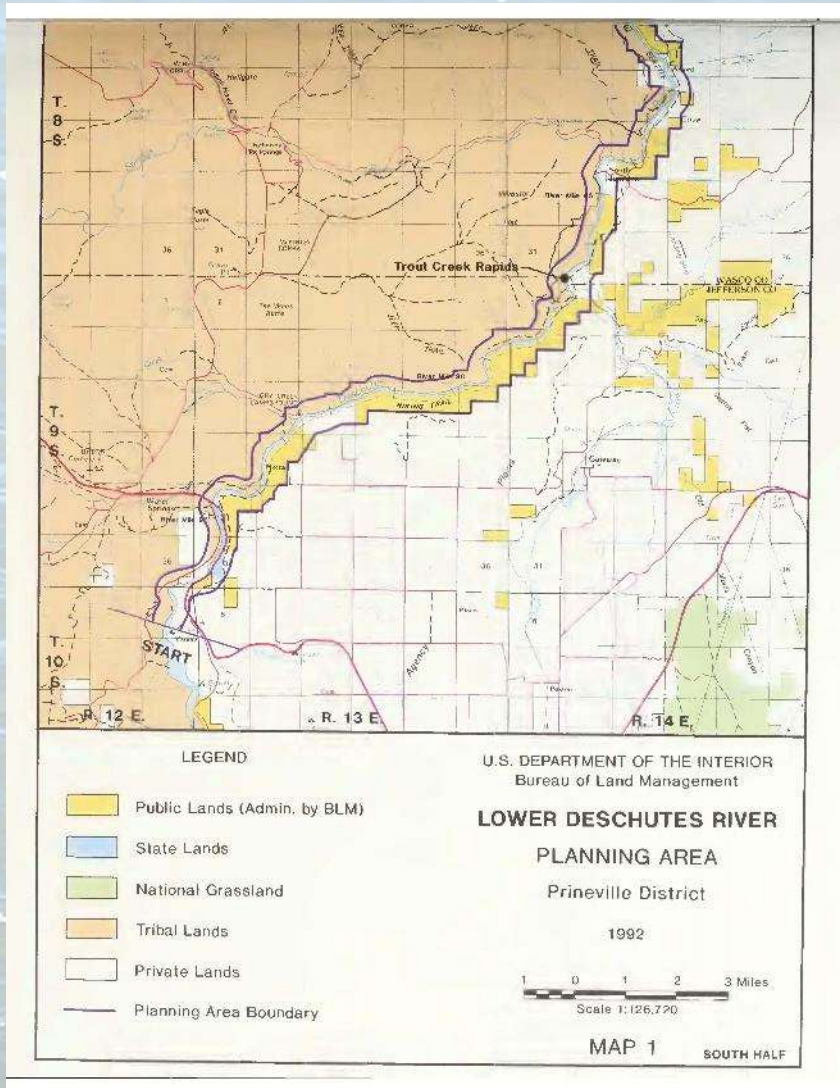
(1980s - 1990s)

- **1988 – Passage of Wild & Scenic River Legislation for Lower Deschutes**

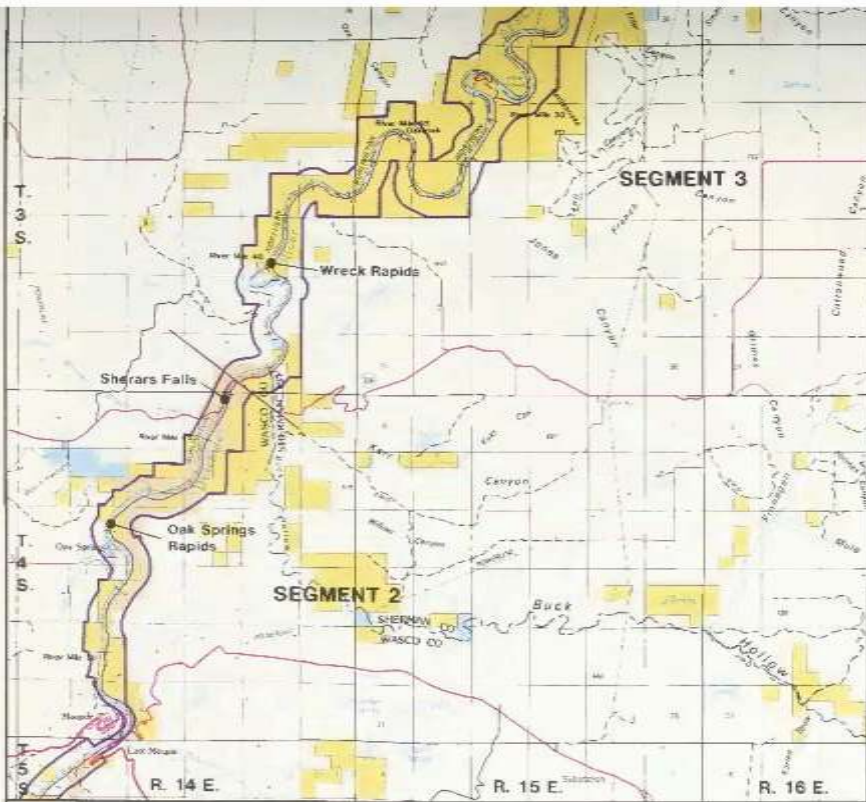


- **A joint comprehensive, integrated planning process was initiated.**
- **11 federal, tribal, state and local government representatives and a 9-member governor appointed group of citizen stakeholders.**

The lower 100 miles of the Deschutes was designated a WSR in 1988



to be “administered by the Secretary of the Interior through a cooperative management agreement between The Confederated Tribes of the Warm Springs Reservation and the State of Oregon”.



LEGEND

- Public Lands (Admin. by BLM)
- State Lands
- Tribal Lands
- Private Lands
- Planning Area Boundary

U.S. DEPARTMENT OF THE INTERIOR
Bureau of Land Management

LOWER DESCHUTES RIVER

PLANNING AREA

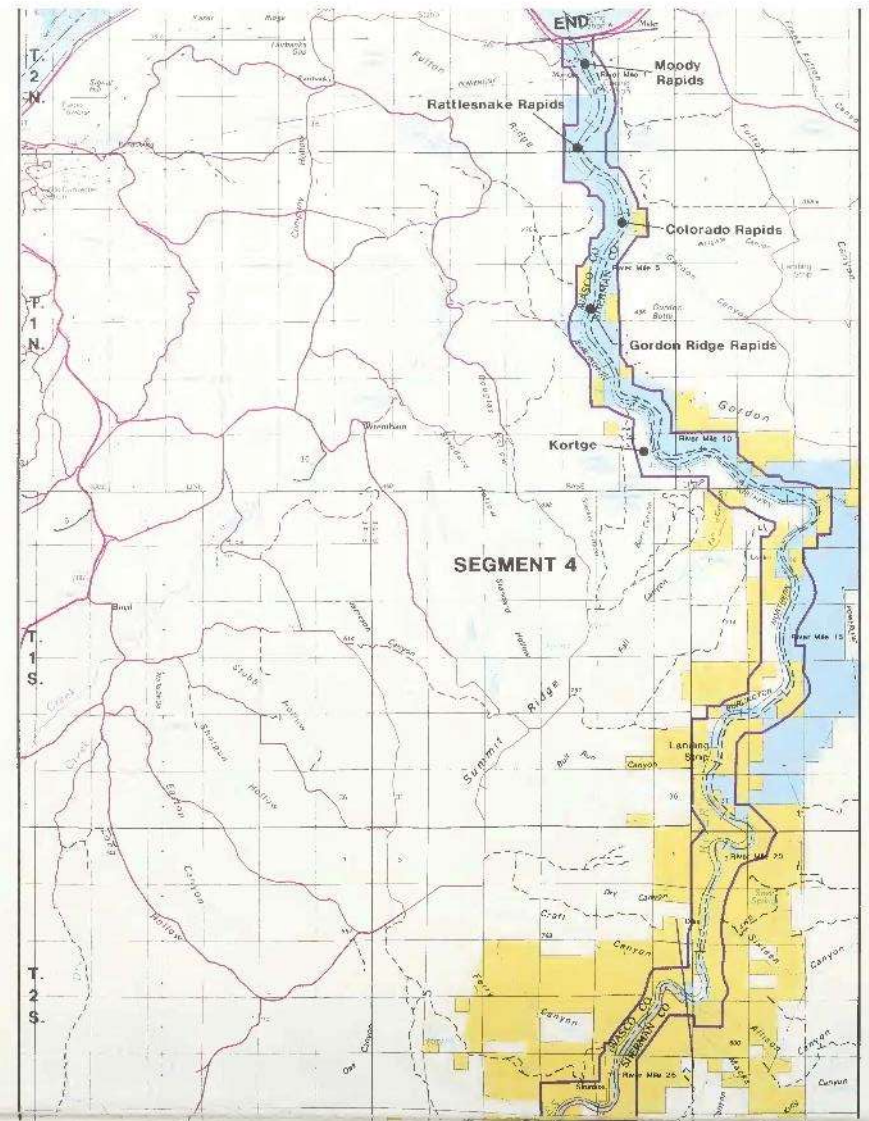
Prineville District

1992



Scale 1:126,720

MAP 2 NORTH HALF



1993 Wild & Scenic River Plan

- **The Plan resolved a number of controversial issues.**
- **Monitoring and evaluation of plan implementation was to be carried out utilizing the Limits of Acceptable Change concept.**
- **The Plan created executive, managerial and technical groups “to ensure that decisions in the Plan will be implemented and issues addressed and resolved in a coordinated ongoing fashion”.**



1993 Wild & Scenic River Plan

- **Representatives on one or more of these groups included:**
 - Bureau of Land Management;**
 - Bureau of Indian Affairs;**
 - Confederated Tribes of the Warm Springs Reservation;**
 - Oregon State Parks;**
 - Oregon Dept. of Fish and Wildlife;**
 - Oregon State Marine Board; and**
 - Oregon State Police.**



- **Local governments were added to each of these groups in 2002.**

1993 Wild & Scenic River Plan

- **The most contentious issue on the river was the type of allocation system for issuing boating permits if a limited entry system became necessary.**



- **After another 4 years (1997) of studies and intense negotiations, a common pool allocation system was agreed to.**

- **It took another 7 years (2004) and the settlement of a federal lawsuit to actually begin implementation of the Lower Deschutes River Common Pool Allocation System.**

IMPLEMENTING THE PLAN (1990s - early 2000s)



MANAGEMENT OVERVIEW (2000s - TODAY)



ROLES & RESPONSIBILITIES (Tribal Perspective)

- **The Deschutes River forms the eastern boundary of the reservation and the Tribes have reserved treaty rights in their ceded area that includes all of the Deschutes Basin.**



- **It is the 'life blood' of the Warm Springs people literally and culturally.**

ROLES & RESPONSIBILITIES

(Tribal Perspective)

- **The Warm Springs Tribe is a sovereign nation with rights that even pre-date Oregon statehood.**
- **As a sovereign nation, federal agencies are required to conduct government-to-government consultation on actions on public lands that have a potential impact on a particular tribe's rights.**
- **This is a very misunderstood and often ignored requirement of federal land management agencies.**

ROLES & RESPONSIBILITIES (Tribal Perspective)

- **The Tribes role is more than just a normal consultation requirement.**



- **The Confederated Tribes of the Warm Springs Indian Reservation are in the unique role of being “co-managers” of the lower Deschutes River along with the federal government, the State of Oregon and local governments.**

ROLES & RESPONSIBILITIES

(State Perspective)

- **National Wild & Scenic River vs. Oregon State Scenic Waterway**
 - **OR State Scenic Waterways - Goals**
 - **OR State Scenic Waterways - Description**
 - **OR State Scenic Waterways – Designations**
 - **OR State Scenic Waterways – What’s allowed?**
- 
- A scenic landscape featuring a river in the foreground, a line of trees, and a large, rocky hillside in the background. Power lines are visible on the right side of the image. The sky is overcast.

ROLES & RESPONSIBILITIES

(State Perspective)

- **Oregon Parks and Recreation Department (OPRD) - Partner**

- **OPRD - Role**

- **Scenic Waterway Rules**

- **Other State Agencies**

- **OPRD – Additional roles**



ROLES & RESPONSIBILITIES

(Local Government Perspective)

- **Why is Local Government Involved?**
- **How Does the 'Management' Impact/Affect Local Communities?**
- **What is the Role of Local Government in the Process?**
- **Goals/Hopes for the Future?**





TO PROTECT AND ENHANCE

ROLES & RESPONSIBILITIES (Bureau of Land Management Perspective)

- **Natural & Cultural Resources**

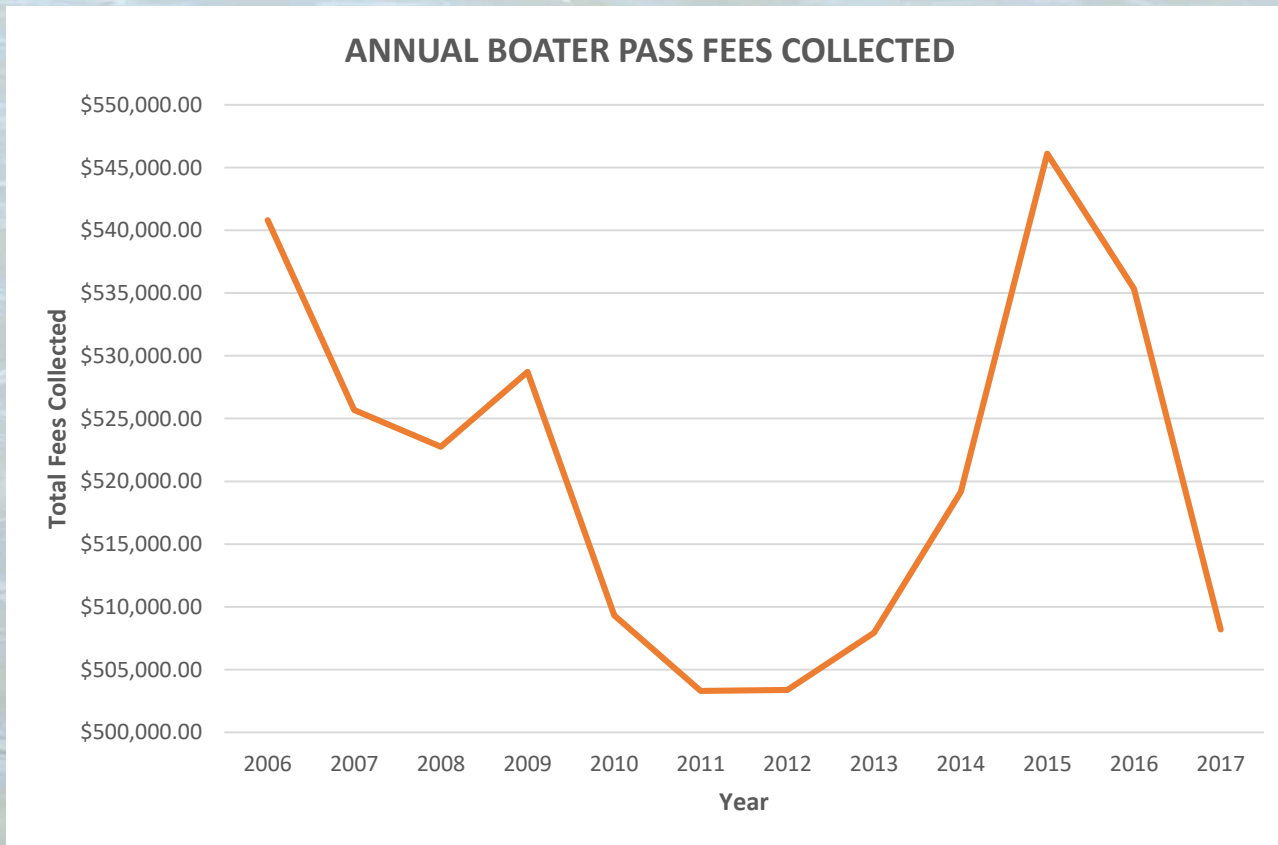


Uses: Traditional, Commercial, & Individual

PERMITTING & USE

- **Commercial Permitting (Guiding & Outfitting)**

- **Common pool vs. allocated use**



- **Commercial Permitting (Filming, other uses)**

SO MUCH ACCOMPLISHED

(Managing in Partnership Today)

- **The complexities of managing in partnership**
- **The many benefits**
- **Lessons learned**



QUESTIONS

