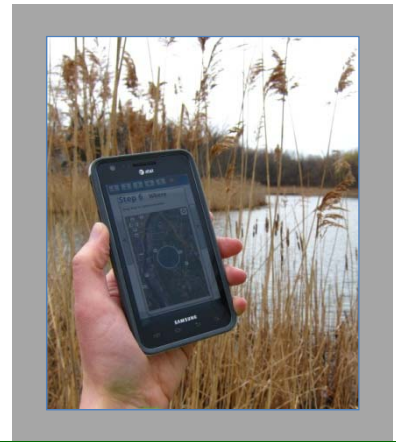




iMapInvasives

Sharing information for strategic management



New York's Online Invasive Species Database and Mapping System

What is iMapInvasives?

iMapInvasives is an online, GIS-based, all-taxa mapping tool that aggregates and displays invasive species location data from many sources. It provides versatile mapping resources for monitoring and management projects, from a local to state-wide level. Data is received from partners across the state through batch uploads and quality-controlled online submissions. The **New York Natural Heritage Program** coordinates the database for the state.

Who is iMapInvasives for?

iMapInvasives is designed to support efforts at many levels, including Partnerships for Regional Invasive Species Management (PRISMs), state and local agencies, non-profit organizations, and volunteers:

General public – Simple interface with generalized maps of locations (no point data) and online forms to report new sightings

Citizen scientists, educators, volunteers – Report invasive species on the map for confirmation, and view and search state data

Project leaders – Manage data submitted by volunteers and staff

Researchers and policy makers – Search the data and create maps and reports to better understand the distribution of invasive species

Natural and agricultural resource managers – Advanced mapping of infestations, surveys, and treatments with GIS-based polygons and detailed field forms; layered, customizable maps and reports; early detection watch lists, and email alerts



Survey Information

Search: Search for Location

* Survey Area
Use the buttons on the top right side of the map to add a feature:

- Use the red '+' button to delete a polygon
- Use the green '+' button to draw a new polygon (Double click to end drawing the survey polygon.)
- Use the pan button to move the map or edit the polygon

Polygon Area (in square meters): 102790.82702308812

Basic Survey Fields

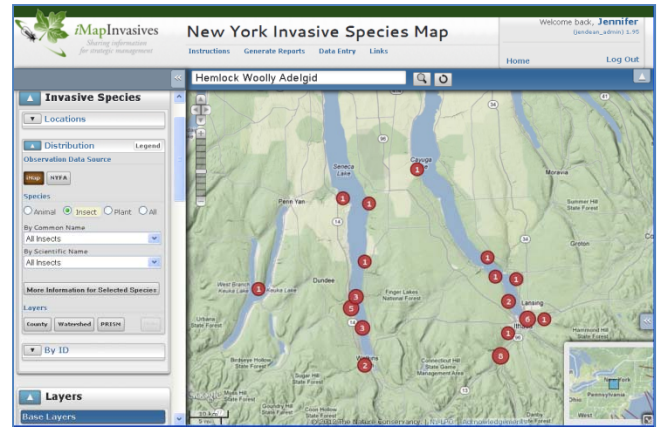
* Survey Goal	in Field potential EDRR locations
* Lead Contact	Dean_James_S
* Targeted Species	Adelges (Insecta)
Targeted Species Detected	Adelges (Insecta) Scaphisoma acutatum

Basic Data Entry

Report infestations quickly and accurately

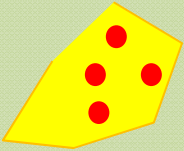
OBSERVATIONS record infestations as points on the map with step-by-step data entry to make reporting simple for all users.

Report observations online and with your smartphone!

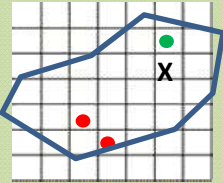


Advanced data entry

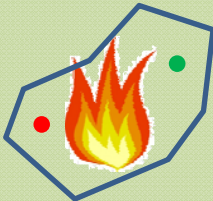
Online polygons plus detailed information in flexible data forms



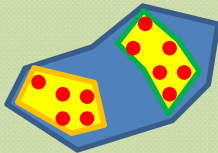
ASSESSMENTS describe the scope of infestations. Can be used to track spread of infestations or treatment effectiveness over time.



SURVEYS track search efforts in specific areas, and report whether or not the targeted species were detected. Customized forms make data entry simple for many types of projects, such as aquatic, host tree, and systematic surveys.



TREATMENTS document control efforts with detailed forms specific to treatment type (e.g., mechanical, biocontrol, chemical). Share information about control efforts with other trained iMap users who have treatment-level access for the state.



INFESTATION Management Records integrate many types of data for a defined, managed population that may include many observations, assessments, and treatments.

To get involved, go to www.NYimapinvasives.org and:

1. Request a login account
2. Get trained to enter data
 - Start with the online video training (for basic data) and check the calendar for upcoming advanced sessions
3. Login to view, search, and map data

Questions? Contact:

imapinvasives@nynhp.org

www.NYimapinvasives.org



New York
Natural Heritage
Program

Supported by the New York State Environmental Protection Fund through a contract with NYS Department of Environmental Conservation